



Gold Aura Limited

A.B.N. 75 067 519 779



24 September 2007

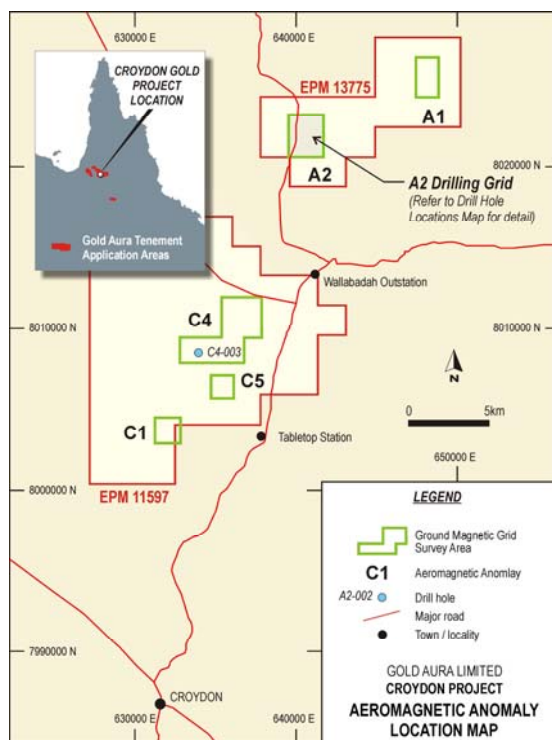
SIGNIFICANT DRILL INTERSECTIONS - ANOMALY A2, CROYDON

KEY POINTS

- Significant intersections obtained from hole A2-006 are as follows;
 - 10.0m (305.0 to 315.0m) at 2.30% zinc, 144 g/t silver and 0.89% lead**
 - 20.0m (418.0 to 438.0m) at 4.2% zinc and 49 g/t silver**
Including 2.0m (419.0 to 421.0m) at 11.8% zinc and 119 g/t silver
Including 2.0m (434.0 to 436.0m) at 19.7% zinc and 228 g/t silver

DETAILS

Assay results for hole A2-006 has now been received. The hole was designed to test Anomaly A2, 200 metres along strike to the west from discovery hole A2-001. The 507.1 metre hole was drilled to the north on an inclination of 60 degrees.



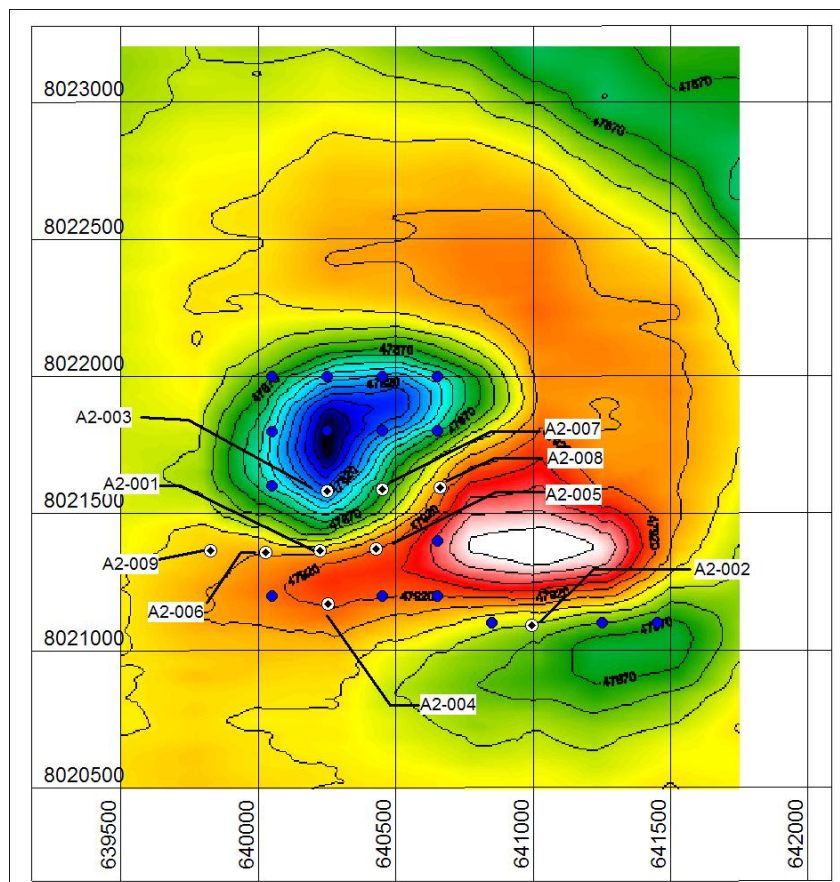
Significant polymetallic vein style mineralisation was intersected in the basement from its commencement below the overlying sediments at 136.0 metres to the end of the hole. The entire 371.1 metre basement section was found to contain;

- 0.41% zinc, 9.7 g/t silver and 0.041% lead.*

Significant intersections from hole A2-006 are as follows;

- . 1.0m (215.0 to 216.0m) at 1.09% zinc, 53 g/t silver and 0.1% lead
- . 1.0m (269.0 to 270.0m) at 1.60% zinc and 20 g/t silver
- . 3.0m (283.0 to 286.0m) at 1.77% zinc, 63 g/t silver and 0.60% lead
- . 10.0m (305.0 to 315.0m) at 2.30% zinc, 144 g/t silver and 0.89% lead
- . 1.0m (320.0 to 321.0m) at 1.91% zinc and 32 g/t silver
- . 1.0m (349.0 to 350.0m) at 2.27% zinc and 16 g/t silver
- . 20.0m (418.0 to 438.0m) at 4.18% zinc and 49 g/t silver
*including 2.0m (419.0 to 421.0m) at 11.77% zinc and 119 g/t silver and
including 2.0m (434.0 to 436.0m) at 19.70% zinc and 228 g/t silver*

Scan results from the intersections indicate some also contain significant levels of tin. These will be more accurately determined by x-ray fluorescence and reported upon when available.



Drill hole locations - Anomaly A2 area

The intersections obtained in hole A2-006 indicate that the higher grades intersected in discovery hole A2-001 (11.0m at 6.33% zinc and 67 g/t silver; 5.05m at 8.00% zinc and 180 g/t silver) extend for at least 200m to the west. Assays are awaited from the other holes to determine the extent of the higher grade zones.

FORWARD PROGRAM

The second hole at Anomaly A1 is now in progress. Gravity and induced polarisation (IP) surveys have now been completed at Anomaly A2 and it is anticipated that interpretation of the acquired data will generate new target for drill testing.

Assays for holes A2-002 to A2-005 and tin assays for hole A2-006 are expected in the next one to two weeks. Samples for holes A2-007 and the upper sections of holes A2-008 and A1-001 have been submitted to the assay laboratory and results are expected in four to five weeks. Processing of all remaining drill core prior to sample despatch is in progress.

ABOUT GOLD AURA LIMITED

Gold Auras' principal activity is the global exploration for world class mineral resources. Its current focus is directed towards follow-up investigations of the newly discovered zinc dominant and copper dominant, mineralised zones at Croydon, the resource infill drilling program at Gameta in PNG and the commencement of exploration at Sao Chico in Brazil. Gold Aura is also continuing with exploration on its promising gold projects in Kazakhstan and China.

For further information please contact;

Ken Chapple,

Managing Director

 +61 7 3833 3833  Mb 0418 758 301

or visit Gold Aura's website at www.goldaura.com.au.

The information contained in this report relating to exploration results is based on information compiled by Mr Ken Chapple, Managing Director of Gold Aura Limited. Mr Chapple is a Member of the Australasian Institute of Mining and Metallurgy and has the relevant experience in relation to the mineralisation being reported upon to qualify as a Competent Person as defined in the 2004 Edition of the Australasian Code for Reporting of Exploration Results, Mineral Resources and Ore Reserves. Mr Chapple consents to the inclusion in the report of the matters based on his information in the form and context in which it appears.

Yours faithfully

Gold Aura Limited



Ken Chapple
Managing Director